



School will open to **Reception, Year 1, Year 6** and children of **key workers/ other group**.

We have plans in place to ensure the school is safe for children to return with rigorous cleaning.

## Arrival & Collection



### Reception

10am—3pm

Enter via Piers Road  
Wait on the reception playground marked lines.



### Year 1

9.45am—3pm

Enter via the main playground gate  
Wait on the marked lines on the main playground.



### Year 6

9.45am—3.15pm

Enter via the main playground gate  
Wait on the marked lines on the main playground.



### Key Worker & Other Children

10am—3.15pm

Enter via the St. Michael's Hill gate  
Wait on the marked lines on the back playground.



Children will be taught how to socially distance, but this cannot be guaranteed. Parents must socially distance on arrival and collection of children.



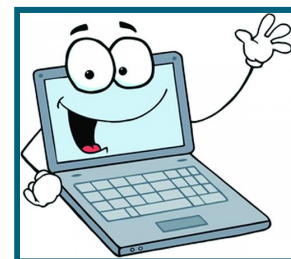
Your child's temperature will be checked at the start of each day.



If your child develops symptoms, you must call 111 and let the school know.



All children need to wear clean clothes everyday.



Online work will be set if children are not in school.



If you need more information:  
Please call: 0121 554 7818  
Email: [enquiry@stmich21.bham.sch.uk](mailto:enquiry@stmich21.bham.sch.uk)



You must register your child's place at [www.stmich21.bham.sch.uk](http://www.stmich21.bham.sch.uk)